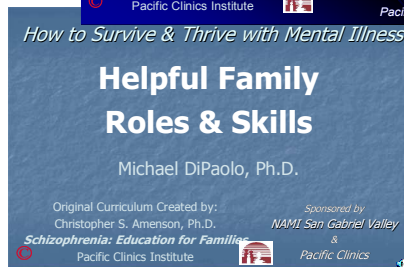
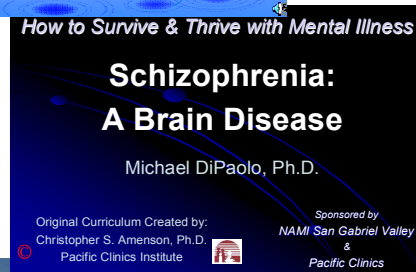
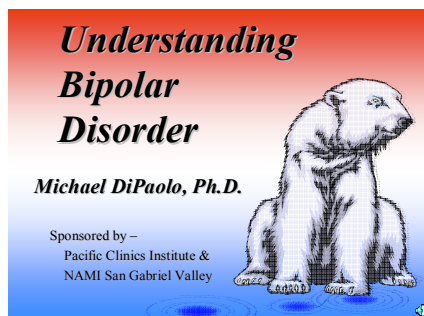


*The Georgette Shatford Memorial Education Series*

## **How to Survive & Thrive with A Mentally Ill Relative**

Dr. DiPaolo presents a seven lecture series  
now made available on video by Just Life Productions!

Series co-produced by:  
National Alliance on Mental Illness (NAMI) San Gabriel Valley &  
Pacific Clinics Institute



### Videos Available:

1. **Understanding Bipolar Disorder**
2. **Treating Bipolar Disorder**
3. **Schizophrenia: A Brain Disease**
4. **Schizophrenia: Causes, Course & Prognosis**
5. **Medication & Compliance (Schizophrenia)**
6. **Psychosocial Rehabilitation & Why It's the State of the Art Treatment**
7. **Helpful Family Roles & Skills**

Videos are approximately 2 hours

### **For Information about upcoming presentations or to order videos:**

Contact the NAMI San Gabriel Valley Office at 626-577-6697  
Please specify which video(s) you would like & if you want DVD or VHS

This series is presented every spring  
at Pacific Clinics in Pasadena, California